



SERVICE BULLETIN

SK-SB013

Rev NC

Page 1 of 4

Cub Crafters, Inc. Considers Compliance Mandatory

EFFECTIVE DATE: This Service Instruction is effective ***June 20th, 2026***

SUBJECT: *INSPECTION AND MODIFICATION OF BERINGER MASTER CYLINDER & PARKING BRAKE INSTALL*

MODELS AFFECTED: *CCX-2000 S/N 0113 THRU 0132*

COMPLIANCE TIME: *RECOMMEND WITHIN NEXT 10 HOURS OF OPERATION. Compliance with this Service Bulletin is suggested and is at the sole discretion of the owner/operator of the Experimental Amateur-Built aircraft.*

PURPOSE: *Cub Crafters has been made aware of some instances of improper installation of the Beringer Master Cylinder and parking brake installation that might cause inadvertent engagement of the parking brake during regular operation of the aircraft.*

PARTS LIST :

<u>PART</u>	<u>DESCRIPTION</u>	<u>QTY</u>
RM0567-001	Tube of Loctite 567*	1
AN822-3D	Elbow 90° Fitting, 1/8 Pipe to 3/16 Tube, Aluminum	2
SK96106-001	Plumbing Brace, Beringer Master	4
HDW-912-49A126	4-40 X 1-1/2 Pan Head Screw, SS	2
AN960-4L	Washer, Flat, Thin	2
MS21042L04	Nut, Self Locking Steel	2
*provided by shop/customer		

INSTRUCTIONS:

Note: The following steps must be performed on both (left and right) master cylinders.

1. Read all instructions before beginning any work.
2. Inspect to verify if the parking brake has been installed as shown in Figure 1:

Cub Crafters, Inc. Considers Compliance Mandatory

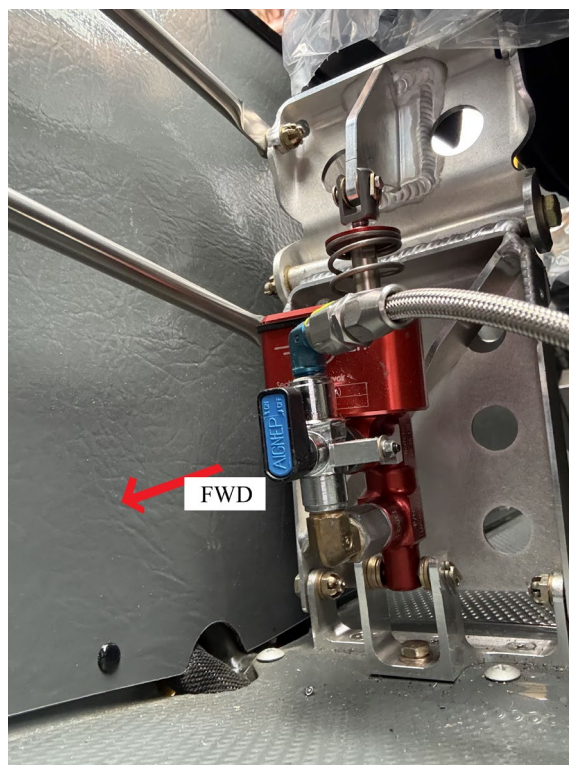


Figure 1: Parking Brake Installation (RH Shown)

3. If the parking brake has been installed in the way shown in Figure 1, make a logbook entry stating that the parking brake install was checked and verified to be correct in accordance with SK-SB013 Rev NC. If the parking brake install is NOT as shown, proceed to the next steps.
4. Chock wheels and release parking brakes.
5. Disconnect the valve from the brake line. Disconnect the valve from the brass elbow fitting. Lastly, remove the brass elbow fitting that is attached to the Beringer Master Cylinder.
6. Before installing the fittings, check to make sure that they are undamaged, that the assembly contains the correct components, that there is a proper fit, and that the components are clean. If threads on the fitting are badly nicked or galled, replace the fitting. If the port or port threads are cracked or damaged, replace the component.
7. Reattach the components in the proper orientation using Figure 2 as reference. Apply RM0567-001 Loctite 567 on the male NPT threads during the assembly. The first one to two threads should be left uncovered to avoid system contamination. In addition, ensure that all connectors are screwed to at least finger tight.

Cub Crafters, Inc. Considers Compliance Mandatory

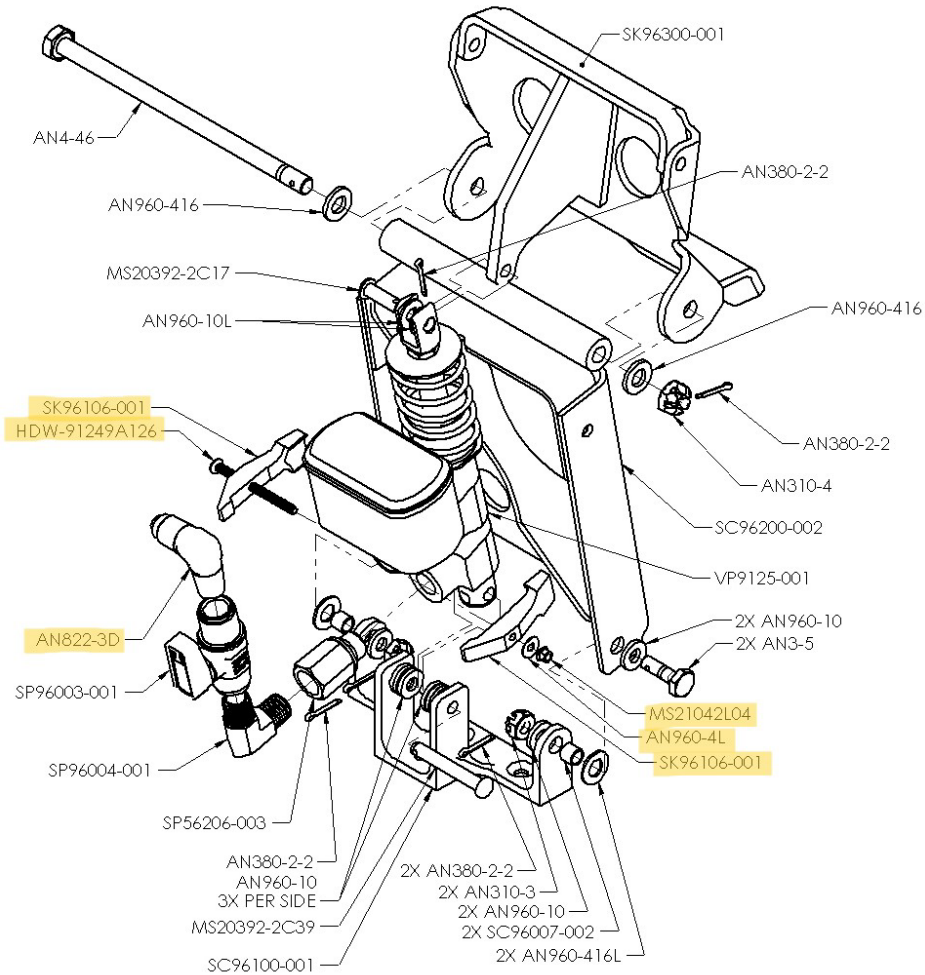


Figure 2: Parking Brake Installation (LH Shown)

8. First connect the brass elbow fitting ensuring that it points upwards. Connect the valve to the brass elbow fitting, ensuring that the valve ends up oriented as shown on Figure 2. Connect AN822-3D to the valve and connect the brake line to it as well. Install SK96106-001 and the associated hardware as shown in Figure 2 to retain the assembly in the correct orientation.
9. Confirm your assembly by using Figure 1 as reference. Make special note that the valve ends up oriented as shown.
10. If there is insufficient brake line length for the modification, inspect the brake line for any kinks. If the length is still not adequate contact Cub Crafters to be supplied a new brake line.
11. The following steps are for bleeding the parking brakes after the assembly is complete:
 - a. Remove the rubber dust cap from the bleeder valve located on the brake assembly and verify that the bleeder valve is free of any debris.

Cub Crafters, Inc. Considers Compliance Mandatory

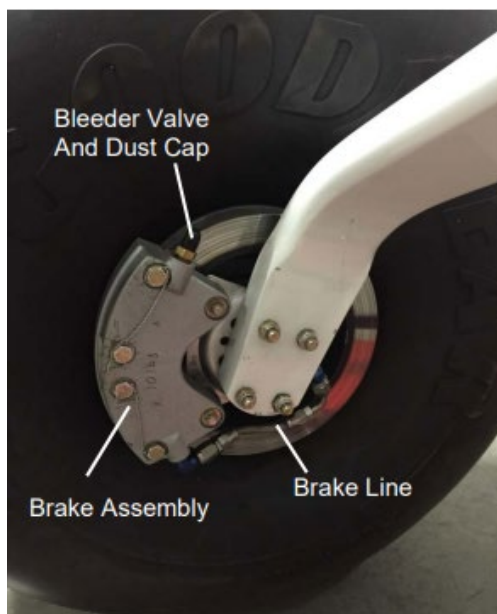


Figure 3: Brake Assembly (RH Shown)

- b. Attach a hose to the bleeder valve located on the brake assembly.
- c. Apply pressure to the brake pedal and open the bleeder valve, allowing fluid and air to leave the system. Close the bleeder valve while pressure is still applied to the brake pedal.
- d. Add hydraulic fluid to the reservoir.
- e. Repeat Steps c and d until all the air is removed from the system.
- f. To ensure that no air is trapped at the high point of the parking brake, crack the hose to elbow connection just above the parking brake while applying pressure to the brake pedal.

12. Make appropriate logbook entry, recording that the parking brake installation has been inspected and re-installed as needed in accordance with SK-SB013 Rev NC. There is no weight and balance change associated with this procedure.

If you are no longer in possession of this aircraft, please forward this information to the present owner/operator and notify Cub Crafters, Inc. Contact the customer service department at:

Cub Crafters, Inc.
1918 S. 16th Avenue
Yakima, WA 98903.
1-877-484-7865 or 1-509-248-9491
support@cubcrafters.com

Please include the aircraft registration number, serial number, current name, and address of the owner and/or operator.