



SERVICE BULLETIN

SK-SB007

Rev NC

Page 1 of 5

Cub Crafters, Inc. Considers Compliance Mandatory

EFFECTIVE DATE: This Service Bulletin is effective **August 10, 2020.**

SUBJECT: *JURY STRUT BRACKET RIVETS*

MODELS AFFECTED: *All CCK-1865, CCK-2000, CCX-1865, AND CCX-2000 models*

CONTINUED INSPECTION: *Check brackets and fittings on normal pre-flight inspections*

PURPOSE: *Instances of loose or sheared rivets for the Jury Strut Bracket have been reported. This Service Bulletin addresses the inspection procedure and the replacement of the brackets with new components if required. Pilots are reminded to inspect jury strut brackets during pre-flight.*

WARRANTY: For Aircraft under warranty, a labor reimbursement for an approved shop will be provided if needed (up to two hours for the left wing, two and one half hours for the right wing, or four hours for both)

PARTS LIST:

<u>Front Spar</u>	<u>Aft Spar</u>	<u>PART</u>	<u>DESCRIPTION</u>	<u>QTY:</u> LH Wing	<u>QTY:</u> RH Wing
✓	✓	TC3017-001	GROMMET	4	4
✓	✓	TC9101-001	5" INSPECTION COVER ASSEMBLY	2	2
✓	✓	RM0568-001	LOCTITE 330, ADHESIVE	AR	AR
✓		HDW-CR3213-4-4	RIVET, CHERRY MAX UNIVERSAL HEAD	3	3
✓		SC31506-001	FRONT SPAR BRACKET, LH	1	0
✓		SC31506-002	FRONT SPAR BRACKET, RH	0	1
	✓	HDW-CR3213-4-3	RIVET, CHERRY MAX UNIVERSAL HEAD	2	2
	✓	SC31604-001	AFT SPAR BRACKET, LH	1	0
	✓	SC31604-002	AFT SPAR BRACKET, RH	0	1

Cub Crafters, Inc. Considers Compliance Mandatory

INSTRUCTIONS:

1. Read all instructions before beginning any work.

PREFLIGHT INSPECTION:

2. During the preflight inspection, verify the hardware installation at the top of both the forward and aft jury struts where they are attached to the wing brackets (see Figures 1 and 5).
3. Grip the jury strut near the top attachment and check for any loose play, movement, or shifting of the jury strut or attachment bracket. Do this for all four jury struts.
4. If there is any movement, shifting, or looseness detected (even with the MS21042L3 nut tightened), proceed with the following instructions to inspect/replace the jury attachment brackets.

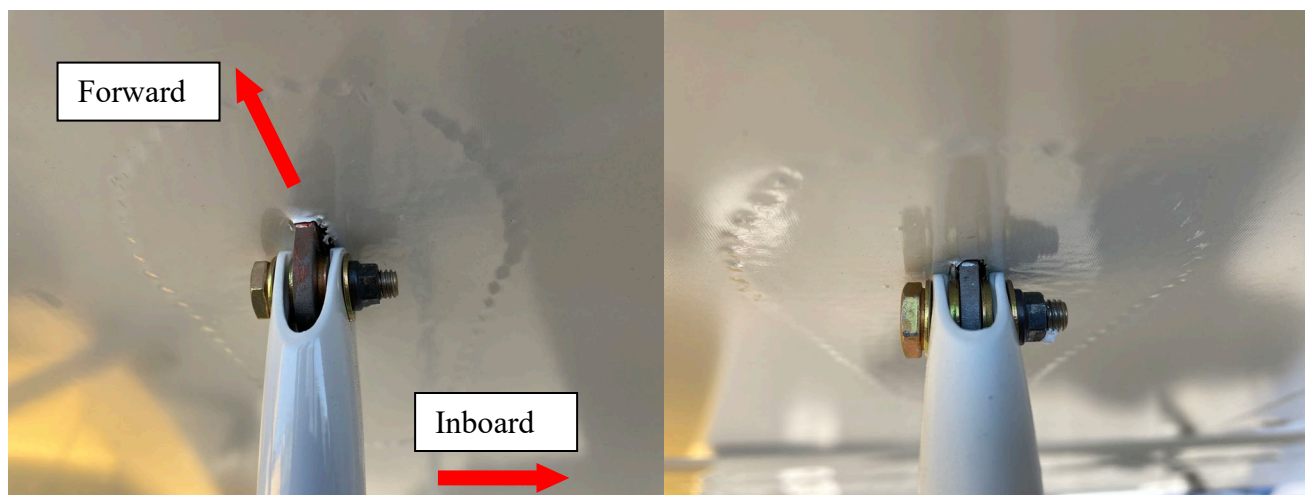


FIGURE 1 – Forward and Aft Jury Strut Attachments (Right Wing)

INSTALL INSEPCION HOLES:

5. Jack the tail of the airplane to near level flight attitude in accordance with the AMM. This is to prevent rivets from falling into an inaccessible part of the wing.
6. Measure 59" inches inboard from the center of the lift strut upper attach bolt and aft 6.5" and 31" from lower trailing edge of the leading edge skin to center the fabric grommet (see Figure 2). Mark the center points.

Cub Crafters, Inc. Considers Compliance Mandatory

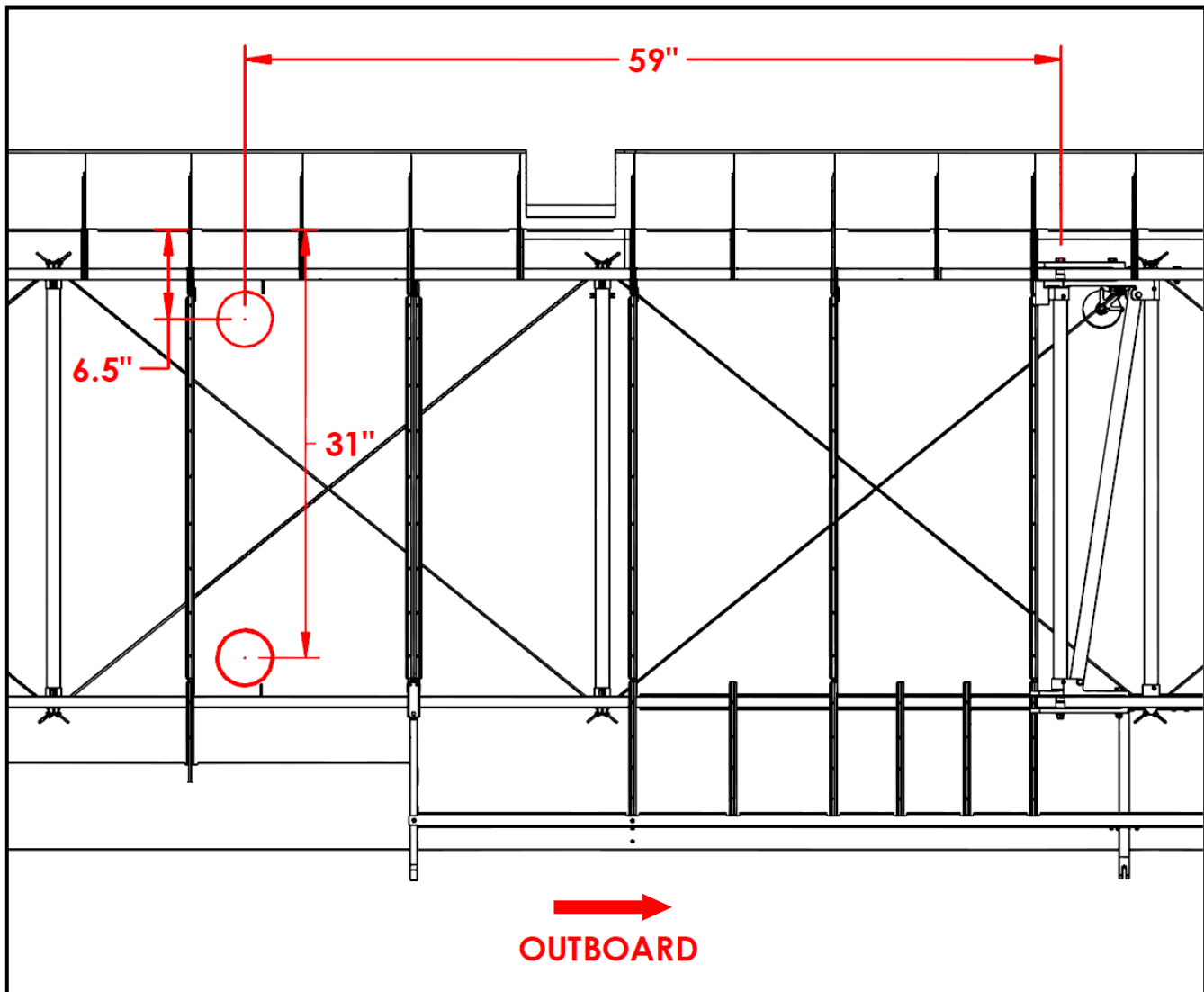


FIGURE 2 – Inspection Hole Location as Viewed from Below the Wing (FOR REFERENCE ONLY)

Cub Crafters, Inc. Considers Compliance Mandatory

7. Lightly sand the flat side of the TC3017-001 grommet for best adhesion using 80-grit sandpaper. Wipe clean with alcohol.
8. Using ScotchBrite® pads, lightly sand the wing area to be covered by the grommet just enough to break the paint glaze but **DO NOT SAND THROUGH PAINT**. Apply Loctite 330 adhesive to the sanded side of the grommet and center over the mark on the skin of the wing. Hold firm pressure for 30 seconds, then remove excess glue to prevent paint damage; allow one hour for adhesive to cure (see Figure 3).
9. Cut fabric from center of inspection ring using a sharp knife.
10. Follow steps 4 & 5 above to install a second grommet on the inside of the hole, sandwiching the fabric.
11. Inspect the area for any wear, corrosion, or damage that would cause an unsafe condition for operation.



FIGURE 3 –Grommet installed on Wing Exterior

REPLACE BRACKET:

12. Remove hardware attaching the upper bracket to the jury strut.
13. Remove the three rivets from the existing bracket, and remove the bracket (see Figure 4).
14. Deburr the holes as necessary. Remove any residual metal shavings from the wing.
15. Install the new bracket using the cherry max rivets: For the Front Spar brackets SC31506-001 & -002, use HDW-CR3213-4-4 rivets. For the Aft Spar brackets SC31604-001 & -002, use HDW-CR3213-4-3 rivets.
16. Assemble hardware and secure the bracket and jury strut. Tighten nut adequately to remove excessive play.

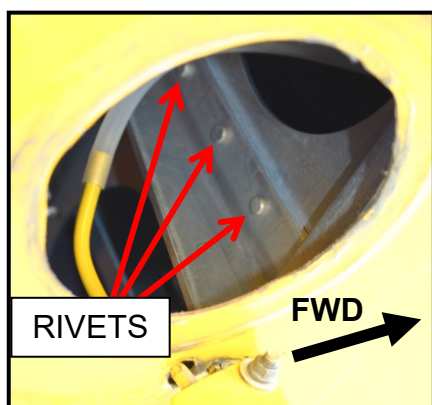


FIGURE 4 – FWD RIVET REMOVAL

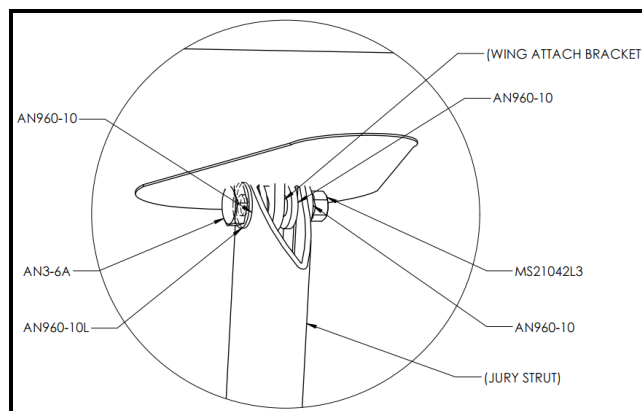


FIGURE 5 – Hardware Assembly

17. Install inspection cover assembly TC9101-001, ensuring that the tabs are perpendicular to the direction of flight.



Cub Crafters, Inc. Considers Compliance Mandatory

- 18. Repeat steps 4-14 for aft bracket and opposite side of the aircraft.
- 19. Make logbook entry that SK-SB007 Rev NC has been complied with: Jury Strut Bracket was replaced with Cherry Max rivets.

If you are no longer in possession of this aircraft, please forward this information to the present owner/operator and notify Cub Crafters, Inc. Contact the customer service department at:

Cub Crafters, Inc.
1918 S. 16th Avenue
Yakima, WA 98903.
1-877-484-7865 or 1-509-248-9491
support@cubcrafters.com

Please include the aircraft registration number, serial number, current name, and address of the owner and/or operator.