



SERVICE BULLETIN

SK-SB003

Rev NC

Page 1 of 3

EFFECTIVE DATE: 10/25/2019

SUBJECT: *INSPECTION & REPLACEMENT OF FUEL FILTER ASSEMBLY; INSPECTION OF FUEL PRESSURE SENDING UNIT*

MODELS AFFECTED: *CCX-2000-0001 AND ON, CCK-2000-0001 AND ON*

COMPLIANCE TIME: *RECOMMEND AT NEXT CONDITION INSPECTION OR OIL CHANGE, WHICHEVER COMES FIRST.*

PURPOSE: *Provides instructions to inspect fuel pressure sensor and to replace the fuel filter assembly. Service Instruction SK-SI002 may be applied in lieu of completing the fuel filter portion of this Service Bulletin.*

PARTS LIST:

| <u>PART</u> | <u>DESCRIPTION</u> | <u>QTY</u> |
|----------------------|---|------------|
| VP5612-005 | Fuel filter, 62 micron, Flare-to-Flare | 1 |
| VP5612-007(FX375-MK) | Fuel filter, 62 micron, Flare-to-MNPT | |
| VP6211-001 | Fuel pressure transducer, World VFR | 1 |
| SP71343-001 | Fuel pressure sender, Executive Glass Touch | |

INSTRUCTIONS:

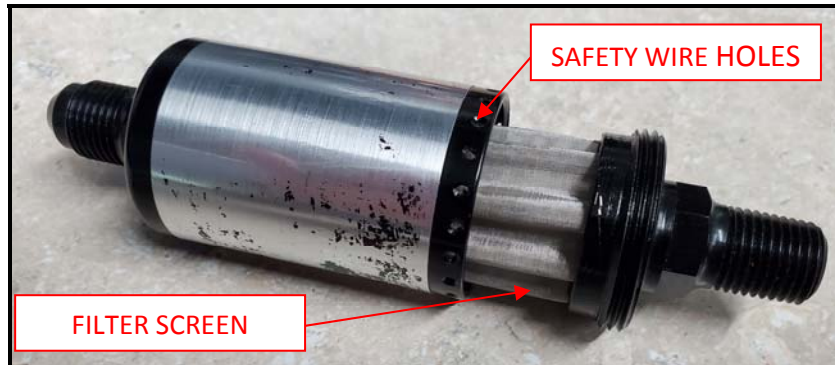
1. Electrically ground the aircraft (reference Aircraft AMM Maintenance Manual CX10000AMM §00-10.)
2. Replace fuel filter assembly (reference AMM CK10000AMM §28-00 6.B)
 - a. Remove engine cowling
 - b. Turn the fuel selector to the "OFF" position.
 - c. Drain all fuel from gascolator.
 - d. If required, remove fuel pump splash guard.
 - e. Disconnect the inlet line of the fuel filter from the gascolator.
 - f. If present, disconnect the line to the fuel pump from the fuel filter, and remove filter.



NOTE:
Replace any 10 micron flare-to-NPT fuel filter assembly installed directly into fuel pump with VP5612-007, ANDAIR P/N FX375-MK, 62 micron fuel filter assembly and skip to Step j. (For flare-to-flare fuel filters installed in-line, use VP5612-005, ANDAIR P/N FX375-M prior to skipping to Step j).

-
-
-
-
-
-
-
- g. Remove housing from filter.

- h. Inspect and clean the filter screen.



- i. Re-safety the filter housing.
j. Reconnect fuel lines to pump and gascolator, or apply fuel safe thread sealant to NPT threads. and reinstall onto fuel pump, then reconnect fuel line from gascolator.
k. If removed, reinstall fuel pump splash shield.
l. Turn on fuel to check for leaks

NOTE:

Inspect and clean the fuel filter every 100 hours or less in accordance with the Aircraft Maintenance Manual CK10000AMM §28-00 APPENDIX A

3. Inspection and replacement of fuel pressure sender:
 - a. Locate fuel pressure sender mounted on the forward side of the firewall, in the upper left quadrant.
 - b. Perform visual inspection for signs of fuel seepage/leakage on sender body.
 - c. Unplug harness from sender and inspect the female plug portion of the sender for evidence of fuel residue.
 - d. If no evidence of leakage is found, reconnect harness.
 - e. If evidence of fuel leakage is found, install new fuel pressure sender; see Parts List to select correct part number corresponding to correct avionics package.
4. Turn on fuel system and fuel pump to perform leak check. Verify fuel pressure.
5. Reinstall engine cowling.
6. Perform ground run and confirm proper fuel flow and fuel pressure per the AFM.
7. Perform final leak check of firewall forward fuel system after ground run.
8. Make appropriate logbook entry, recording inspection and parts replacement per this Service Bulletin.

