



SERVICE BULLETIN

SK-SB001

Rev NC

Page 1 of 4

Cub Crafters, Inc. Considers Compliance Mandatory

EFFECTIVE DATE: This Service Bulletin is effective **November 6, 2017.**

SUBJECT: *ELEVATOR CABLE PULLEY RETROFIT INSTALLATION*

MODELS AFFECTED: *CCX-2000-0001 THROUGH CCX-2000-0010, & CCX-2000-0016*

COMPLIANCE TIME: *WITHIN NEXT 10 FLIGHT HOURS*

PURPOSE: *A retrofit installation of an additional elevator cable pulley is now required.*

WARRANTY: Aircraft under warranty will be provided parts and labor at no cost. All work will be performed at Cub Crafters, Inc.

PARTS LIST:

<u>PART</u>	<u>DESCRIPTION</u>	<u>QTY</u>
AN310-4	Nut, Castle	1
AN380-2-2	Cotter Pin	1
AN380-3-3	Cotter Pin	1
AN4-40	Bolt	1
AN960-416	Washer	2
AN960-416L	Washer	4
SK91016-001	Elevator Pulley Bushing Assembly	2
TC9010-001	Pulley, 1.75"	1

INSTRUCTIONS:

1. Read all instructions before beginning any work.
2. From under the aircraft, remove the triangular inspection cover, retaining all fasteners.
3. Move the elevator cable out of the way, and temporarily secure it in place.
4. Near the forward edge of the inspection cover opening, locate where the two bottom fuselage tubes meet at the forward cross tube, see Figure 1A. Using the aft edge of the forward cross tube as a reference, locate 2X SK91016-001 as shown in Figure 1A. Weld operations and hardware installations should be accomplished per Figure 1A and 1B.

NOTE

It is recommended to assemble 2X SK91016-001, with the pulley and the hardware (except AN380-3-3), before welding it in place. This will ensure that the elevator pulley bushing assemblies remain concentric to each other, and ensure proper gap between the brackets.

Cub Crafters, Inc. Considers Compliance Mandatory

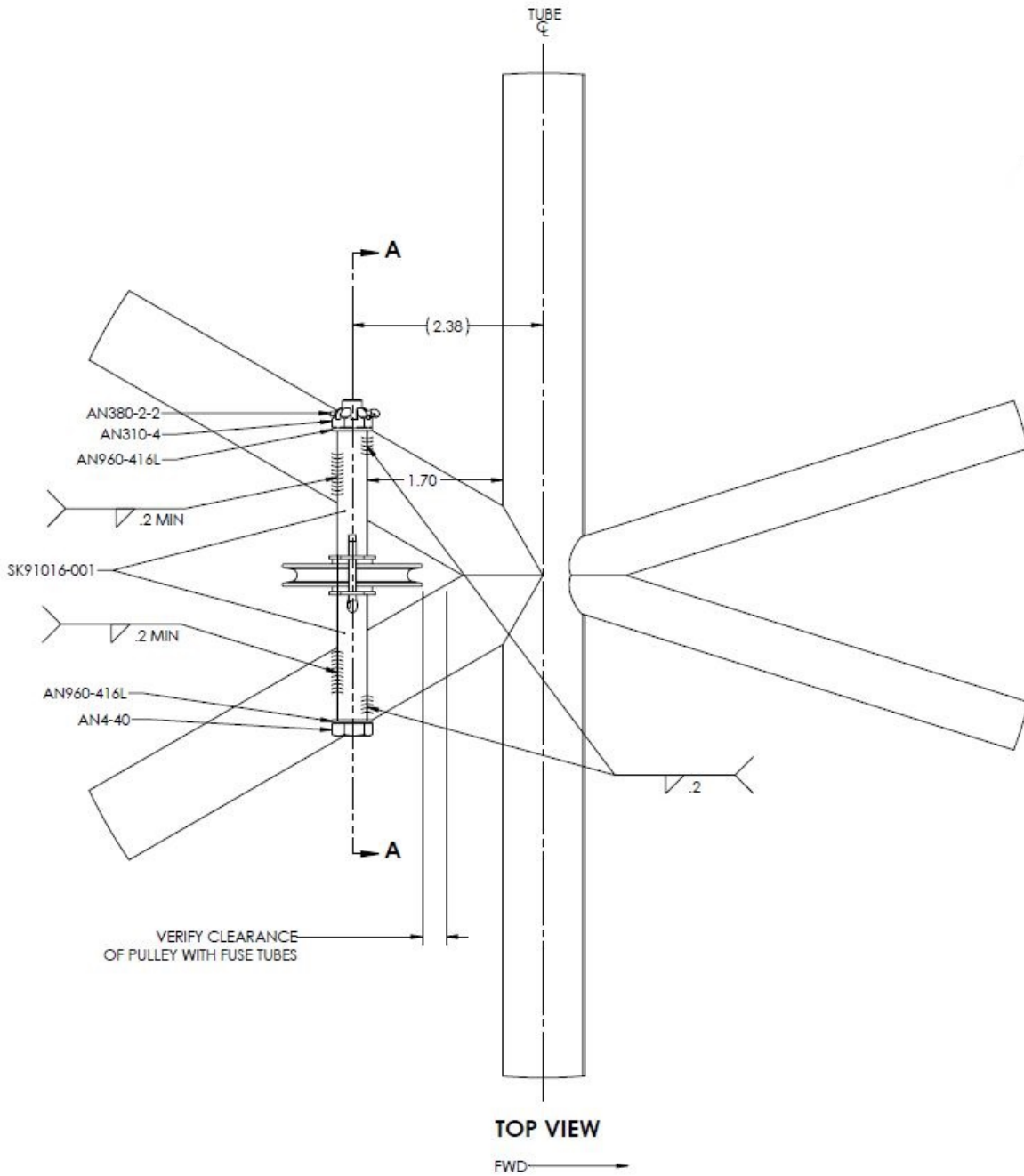
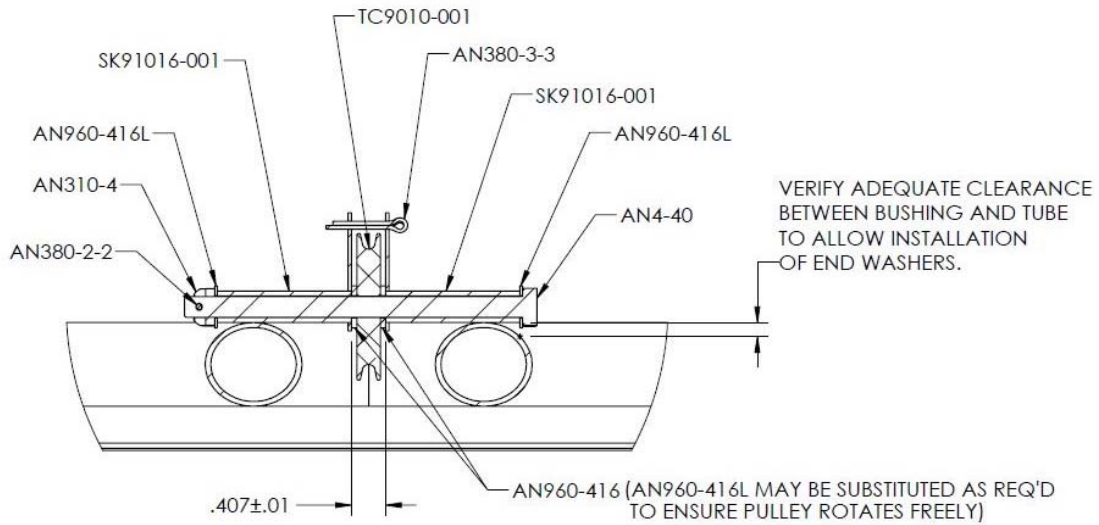
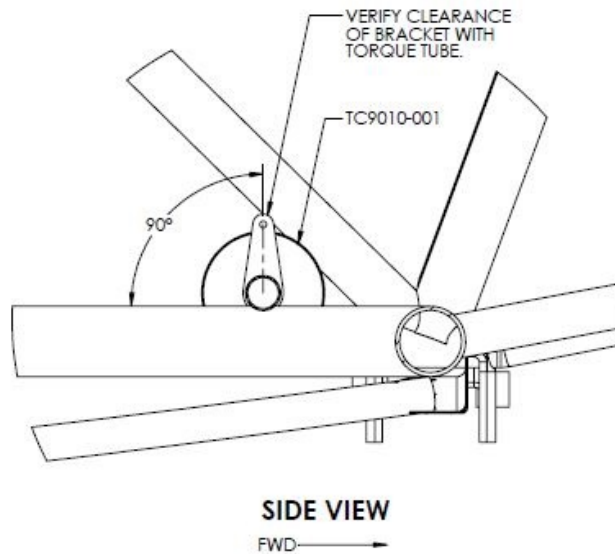


FIGURE 1A – Pulley Installation

Cub Crafters, Inc. Considers Compliance Mandatory



SECTION VIEW A-A



SIDE VIEW
FWD →

FIGURE 1B – Pulley Installation



Cub Crafters, Inc. Considers Compliance Mandatory

5. Rest the elevator cable on top of the pulley, so that it is properly engaged in the pulley groove. Install AN380-3-3 cotter pin, in the upper holes in the pulley brackets.
6. Verify that elevator cable tension is 60 ± 2 lbs. as per CCPS068. Adjust tension as necessary.
7. Move the control stick(s) through full range of motion. Ensure that the stick motion is unobstructed. Ensure that the elevators operate properly.
8. Re-install the triangular inspection cover, using existing hardware.
9. Make logbook entry stating that SK-SB001 Rev NC was complied with. Changes to weight and balance are considered negligible.

If you are no longer in possession of this aircraft, please forward this information to the present owner/operator and notify Cub Crafters, Inc. Contact the customer service department at:

Cub Crafters, Inc.
1918 S. 16th Avenue
Yakima, WA 98903.
1-509-248-9491 or 1-877-484-7865
support@cubcrafters.com

Please include the aircraft registration number, serial number, current name, and address of the owner and/or operator.