

**EFFECTIVE DATE:** This Service Instruction is effective August 27, 2010.

**SUBJECT:** Fuel line leaks at aft fuselage fuel drain.

**MODELS AFFECTED:** CC11-100 and CC11-160 S/N 00001 thru 00140 and 00142 thru 00146.

**COMPLIANCE TIME:** Visual inspection is encouraged immediately; Installation of new insert should be accomplished at the next maintenance action.

**PURPOSE:** Instances of fuel leaks at the fuel drain valve located on the right aft side of the fuselage have been noted. This Service Instruction provides a method to better seal this connection point to prevent or stop a leaking connection.

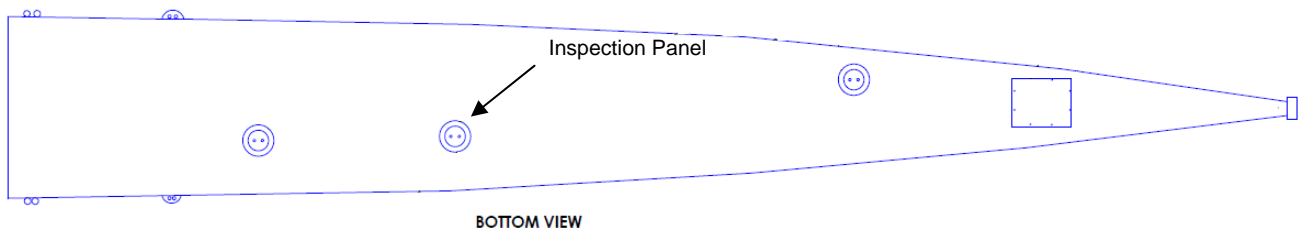
**WARRANTY** Parts will be provided at no cost. Aircraft still under warranty will include up to one hour of labor.

**PARTS LIST:**

<u>PART</u>	<u>DESCRIPTION</u>	<u>QTY</u>
SC60051-001	Fuel Line Insert	1

**INSTRUCTIONS:**

1. Move the fuel selector to the right tank position
2. Remove Inspection Panel at fuel drain location. See location shown in Figure 1.



**Figure 1 – Inspection Panel Location**

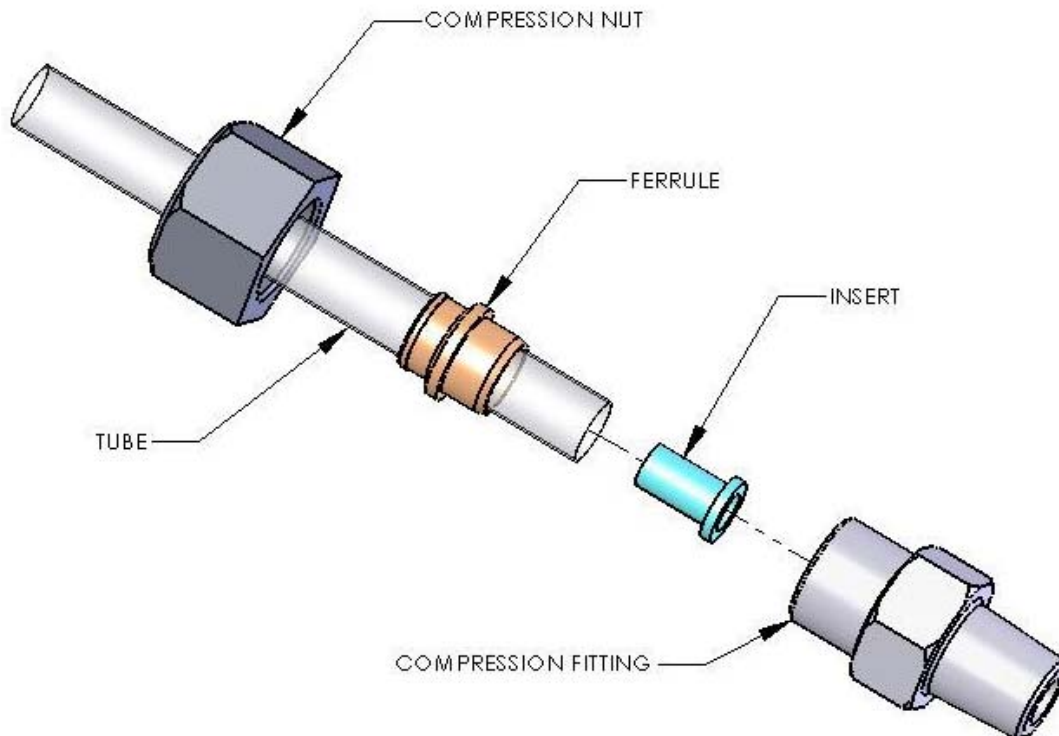
- 2.3. Drain the fuel from the right hand tank by using the fuel drain on the bottom of the aircraft. If removing the drain, make sure that a wrench is used to hold the top half of the fitting still to ensure that its bond is not overly stressed.
- 3.4. Repair as follows:
  - a. Disassemble the compression fitting assembly by using opposing wrenches on the nut and fitting. Push ferrule up tube using a 7/16 socket and extension while holding tube just above ferrule with other hand. Remove the nylon insert. See Figure 2.
  - b. Discard the nylon insert.

- c. Reinstall Compression Tube Fitting:
- Check to make sure there are no dents, nicks, and/or scratches, the assembly contains the correct components, there is a proper fit, and the components are clean. If threads on the fitting are badly nicked or galled, replace the fitting.
  - Lock the ferrule into compression nut ensuring ferrule is properly seated inside compression nut. Insert tube into compression nut and ferrule as shown in Figure 2.
  - Place insert (SC60051-001) into tube ensuring the tube end is touching the insert's shoulder.
  - Fully seat the tube inside the compression fitting.
  - Apply Loctite<sup>®</sup> 271 (Red) or equivalent to fitting threads. Tighten the nut finger tight until friction is felt. Using two wrenches; one on the compression fitting and one on the compression nut, tighten the nut approximately 1-1/2 turns. Allow fitting to cure for a minimum of 1 hour.

**4.5.** Refuel aircraft and inspect for leaks.

**NOTE:**

The fuel selector was on right tank only, set to appropriate position prior to flight.



**Figure 2 – Compression Fitting Assembly View**



## **SERVICE INSTRUCTION**

**SI0016 Rev A**

**Page 3 of 3**

If you are no longer in possession of this aircraft, please forward this information to the present owner/operator and notify Cub Crafters, Inc. of the address of the current owner. Address to:

Cub Crafters, Inc.  
1918 S. 16<sup>th</sup> Avenue  
Yakima, WA 98903.  
1-877-484-7865 or 1-509-248-9491  
[support@cubcrafters.com](mailto:support@cubcrafters.com)

Please include the aircraft registration number, serial number, current name, and address of the owner and/or operator.