



SERVICE INSTRUCTION

SI0014 Rev A

Page 1 of 3

EFFECTIVE DATE: This Service Instruction is effective March 25, 2008

SUBJECT: Hour Meter

MODELS AFFECTED: CC11 S/N 00001 and Subsequent.

PURPOSE: Hour Meter Installation

PARTS LIST:

PART NUMBER	DESCRIPTION	QTY
85904	Hobbs Hour Meter	1
DATC Mini	Datcon Hour Meter	
76575-4	Hobbs Oil Pressure Switch	1
DATC OIL PRES	Datcon Oil Pressure Switch	
VP5215-010	Fitting, Brass 1/8 Compression Tee Assembly	1
10649-17	Coupling, 1/8" IP Brass	1
68x2	Fitting, Weatherhead	1
HDW-22759-16-20	20 AWG, Tefzel	8'
FH2C	Fuse Holder	1
30009-31	Fuse, 1 AMP (ACG-1)	1
VP6001-039	Terminal Ring 22-16G #8 Stud	3
VP6001-035	Terminal Ring 22-16G #10 Stud	1
VP6002-001	Female Disconnect 18G .250 Tab	2
RM4400-002	Tubing, Copper, 1/8"	4"
AN526C632R8	Screw, 6-32 X .5	2
AN365-632	Nut, Nylon Lock	2

INSTRUCTIONS:

1. Remove Left Hand wing root panel.
2. Before cutting hole in panel, verify the hour meter will clear fuel lines, flap controls, and structures behind the panel. After verification, cut hole / opening (.893" x 1.4") for the Hour Meter in approximate location shown. See Figure 1.

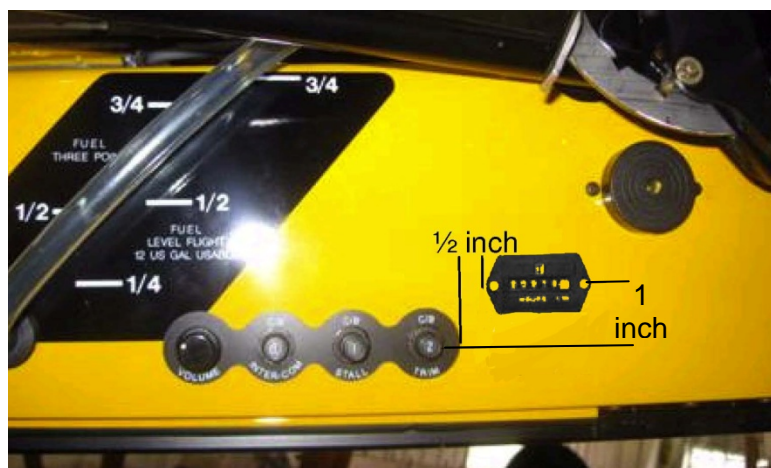


FIGURE 1 - Installation Location

3. Drill two holes for mounting screws using a #29 drill.
4. Secure Hour Meter with AN526C632R8 screws and AN365-632 nuts.
5. Using 20 gauge wire (HDW-22759-16-20), wire end of fuse holder (FH2C) to the positive (+) post on the Hour Meter using spade connector. Wire the other end of the Fuse Holder (FH2C) to the bus bar of the circuit breakers in wing root panel with VP6001-039 (Terminal Ring 22-16G #8 Stud). See Figure 2.

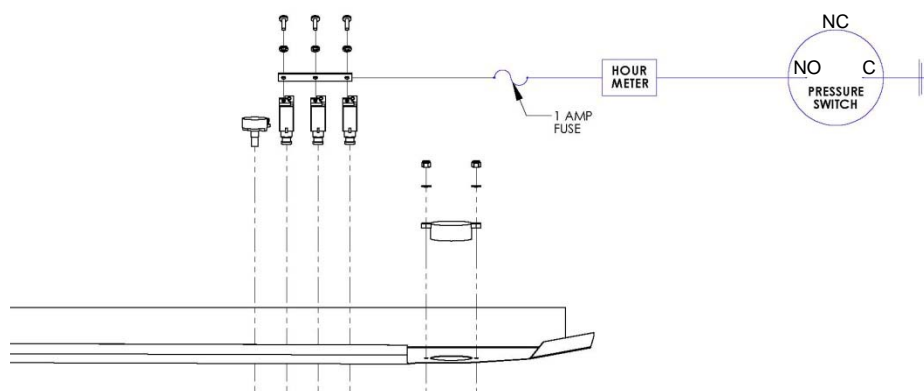


FIGURE 2 - Hour Meter Schematic

6. Route 20 gauge wire (HDW-22759-16-20) from the Hour Meter down the left hand door post and under the panel. Route to right hand side using common practices per AC43.13-1B.
7. Attach wire to negative (-) post on Hour Meter using VP6002-001 (Female Disconnect 18G .250 Tab).
8. Cut brass oil pressure line. Install brass tee (VP5215-010) using compression fittings.



SERVICE INSTRUCTION

SI0014 Rev A

Page 3 of 3

9. Install oil pressure switch on open end of tee using RM4400-002 copper tubing provided. Connect tubing to switch using 1/8" coupler (10649-17) and weatherhead fitting (68X2). Tighten until snug or using common practices per AC43.
10. Attach a 20 gauge wire from the "normally open" (NO) terminal of the Oil Pressure Switch to the Hour Meter and a 20 gauge wire from the "common" (C) terminal of the oil pressure switch to aircraft ground using VP6001-035 (Terminal Ring 22-16G #10 Stud) and connect to grounding tab under instrument panel.
11. Secure pressure switch to cross member with cable ties.
12. Insert 1 AMP fuse (30009-31) in to Fuse Holder.
13. Reinstall wing root panel.
14. Run engine. Check for leaks and operation of gauge.
15. Make entry in logbook that an Hour Meter was installed in the left hand wing root panel.