



SERVICE INSTRUCTION **SI0001**

EFFECTIVE DATE: This Service Instruction is effective October 30, 2006
SUBJECT: Fire Extinguisher Installation
MODELS AFFECTED: CC11-100 S/N CC11-00001 thru CC11-00004.
PURPOSE: Fire Extinguisher Installation

PARTS LIST:

PART DESCRIPTION	QUANTITY
Fire Extinguisher (VP2003-001)	1
Fire Extinguisher Holder (SC229001-001)	1
Screw (AN525-1032R10)	2
Washer (AN960-10L)	2
Hook tape 2" (RM1016-005)	3.5"

INSTRUCTIONS:

Fire Extinguisher Installation

1. Remove the two AN525-1032R8 screws from the SC91014-001 Torque Tube Stiffener located on the forward side of the front seat pillar as shown in Figure 1.
2. Match drill two 1/8" diameter holes in the SC22900-001 Fire Extinguisher Holder using the holes in the stiffener as a guide. Be sure these holes are centered underneath the flap of the holder.
3. Install the holder with two AN525-1032R10 screws and two AN960-10L washers, as shown in detail call-outs 1D5-2 and 1A5-2. Use the existing washers and nuts on the aft side of the seat pillar to secure the new screws (see Figure 1 zone B5). Tighten the nuts to 20 to 25 in·lbs of torque.
4. Make certain the VP2003-001 Fire Extinguisher is clean and free of oil. Apply the hook-and-loop material (RM1016-005) to the housing as shown (zones B1 through D1).
5. Ensure that the flap inside the holder is secured to cover the heads of the mounting screws. Install the extinguisher as shown and secure the ends of the holder around it.

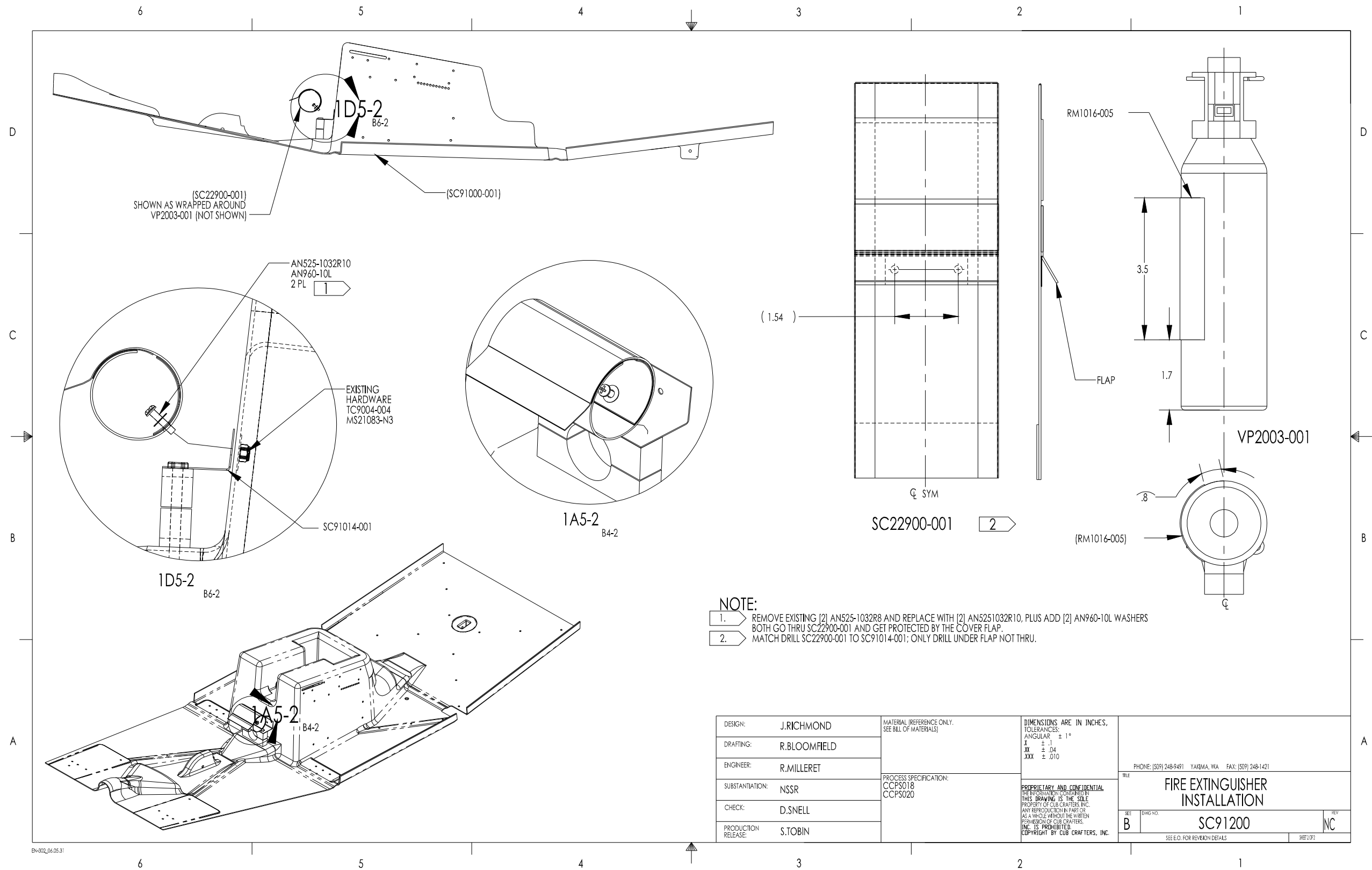


Figure 1 – Fire Extinguisher Installation