



SERVICE BULLETIN

SB00011

Page 1 of 5

Cub Crafters, Inc. Considers Compliance Mandatory

EFFECTIVE DATE: This SERVICE BULLETIN is effective **October 15, 2009**

SUBJECT: RUDDER AND BRAKE ROD ATTACHMENT HARDWARE

MODELS AFFECTED: CC11-100 AND CC11-160 S/N CC11-00001 THRU CC11-00102

COMPLIANCE TIME: INSPECTION (Owner/Operator Task):
PRIOR TO NEXT FLIGHT

HARDWARE REPLACEMENT:
AT NEXT MAINTENANCE ACTION

CONTINUED INSPECTION: INSPECT AT CONDITION INSPECTION

PURPOSE & HISTORY: THE HARDWARE CONNECTING THE FRONT AND REAR RUDDER AND BRAKE PEDALS WAS FACTORY INSTALLED WITH NYLON LOCK NUTS TO PREVENT THE ROTATING HARDWARE FROM BACKING OUT. A FEW INSTANCES HAVE BEEN REPORTED WHERE THESE NYLON LOCK NUTS BEGAN TO BACK OFF. THIS SERVICE BULLETIN REPLACES THE NYLON LOCKING HARDWARE WITH A MORE SECURE LOCKING MECHANISM.

PARTS LIST:

<u>PART</u>	<u>DESCRIPTION</u>	<u>QTY</u>
AN3-6	BOLT, 3/16 X 3/4	6
AN3-7	BOLT, 3/16 X 7/8	2
AN310-3	CASTLE NUT, 3/16	8
AN380-2-2	COTTER PIN, 1/16	8

INSTRUCTIONS:

INSPECTION:

1. Visually inspect the nylon lock nuts securing the rudder pedal rods. (Figure 1)
There will be a total of eight (8) lock nuts located at the four rudder pedals.
2. Inspect each fastener by attempting to move the fastener in its hole.
3. If any of the fasteners are loose, tighten to approximately 20-25 inch pounds.
Replace with the supplied hardware as soon as possible. If all fasteners are secure, the new hardware can be installed at the next scheduled maintenance interval.

Cub Crafters, Inc. Considers Compliance Mandatory



Figure 1: Right Rear Rudder Pedal Assembly Shown

INSTALLATION INSTRUCTIONS:

1. Remove hardware securing one of the four rudder connecting rods. This should be done one location at a time to avoid cross connecting the rudder pushrods.
2. Replace existing AN bolts and nylon lock washers with supplied AN bolts, castle nuts, and cotter pins. Refer to Figure 2 and Figure 3 for hardware locations. Each

Cub Crafters, Inc. Considers Compliance Mandatory

rod should be allowed to freely rotate on its respective bushing. Each castle nut must be torqued to a minimum of 20 inch-pounds before cotter pins are inserted.

3. After all hardware has been installed, check actuation of controls to ensure correct operation of rudder and brakes prior to flight.

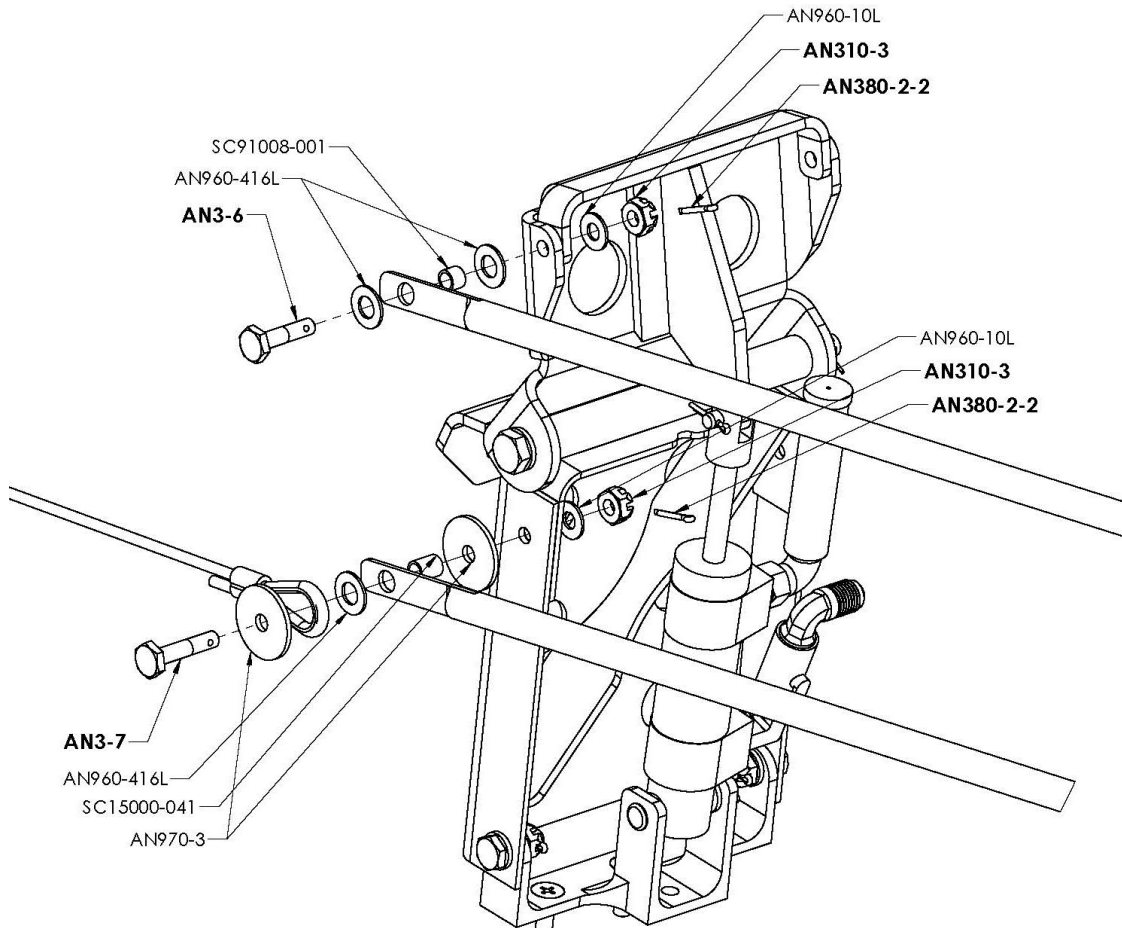


Figure 2: Rear Rudder Pedal Detail (Right-Side Shown)

AFFECTED HARDWARE SHOWN IN **BOLD**

Cub Crafters, Inc. Considers Compliance Mandatory

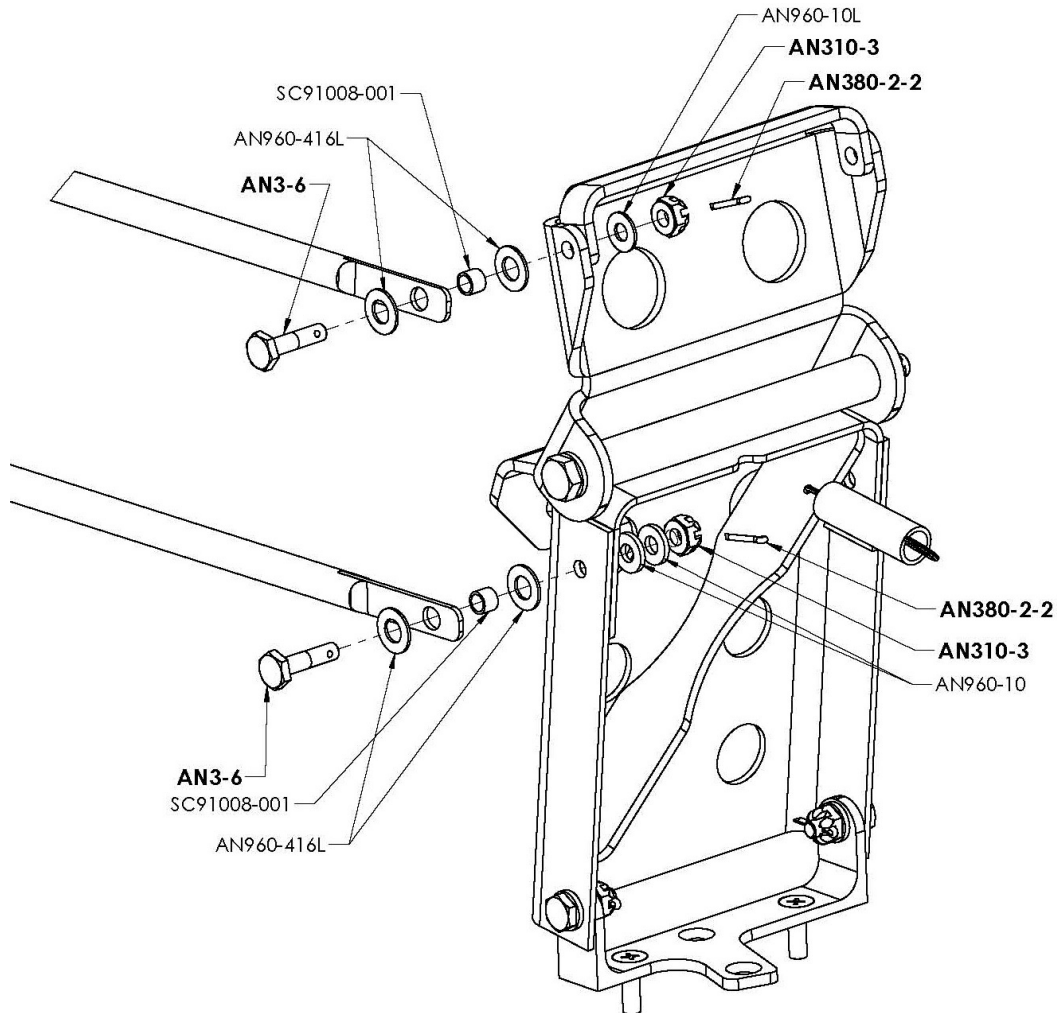


Figure 3: Front Rudder Pedal Detail (Right-Side Shown)

AFFECTED HARDWARE SHOWN IN **BOLD**

4. Make a note in the aircraft logbook that Service Bulletin SB00011 has been complied with.



SERVICE BULLETIN

SB00011

Page 5 of 5

Cub Crafters, Inc. Considers Compliance Mandatory

If you are no longer in possession of this aircraft, please forward this information to the present owner/operator and notify Cub Crafters, Inc. of the address of the current owner to:

Cub Crafters, Inc.
1918 S. 16th Avenue
Yakima, WA 98903.
1-877-484-7865 or 1-509-248-9491
support@cubcrafters.com

Please include the aircraft registration number, serial number, current name, and address of the owner and/or operator.