

CUBFEST



2019

46°34'10.4"N 120°31'53.5"W

INFORMATION PACKAGE

OCTOBER 11-13th, 2019

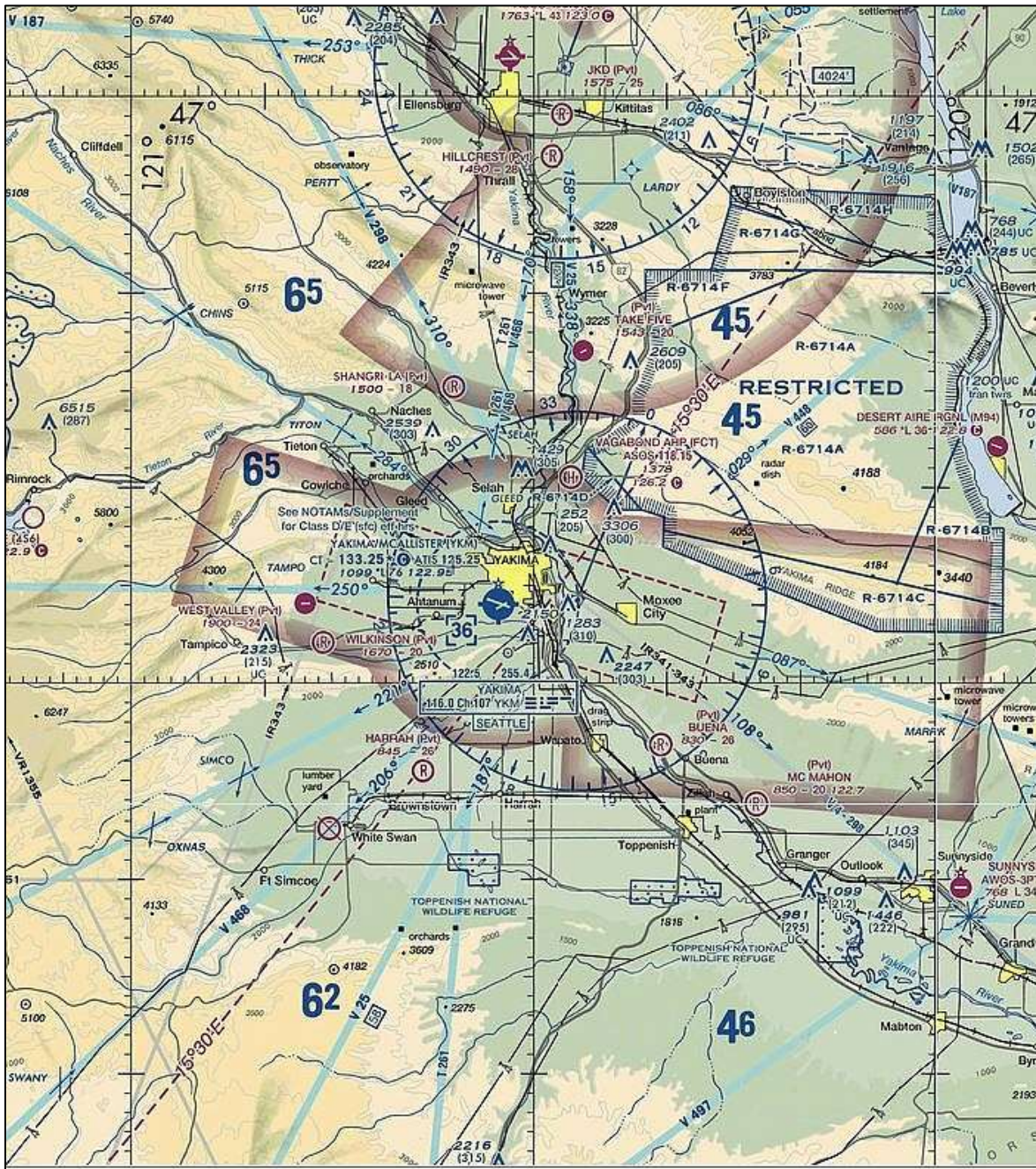
KYKM



Disclaimer: This package is informational in nature and solely designed to give general guidance to pilots and attendees planning to visit the *CubFest 2019* event, hosted by CubCrafters at McAllister Field (KYKM) in Yakima, Washington on October 11 - 13, 2019. It should not be used to meet the requirements of 14 CFR 91.103 and is not to be considered a primary source for overall pilot preparedness responsibilities and pre-flight actions. While every attempt was made to ensure that the contained information has been obtained from reliable sources, CubCrafters is not responsible for any errors or omissions, or for the results obtained from the use of this information.

LOCATION:

CubFest 2019 is located at McAllister Field (KYKM) in central Washington State. McAllister field is a towered airport in Class D airspace. The tower expects many inbound Cubs and asks that arrivals report inbound no less than 20 miles out. For pilots unfamiliar with the local area, special notice should be taken to Restricted Areas R-6714 (A-H) located northeast of the field.

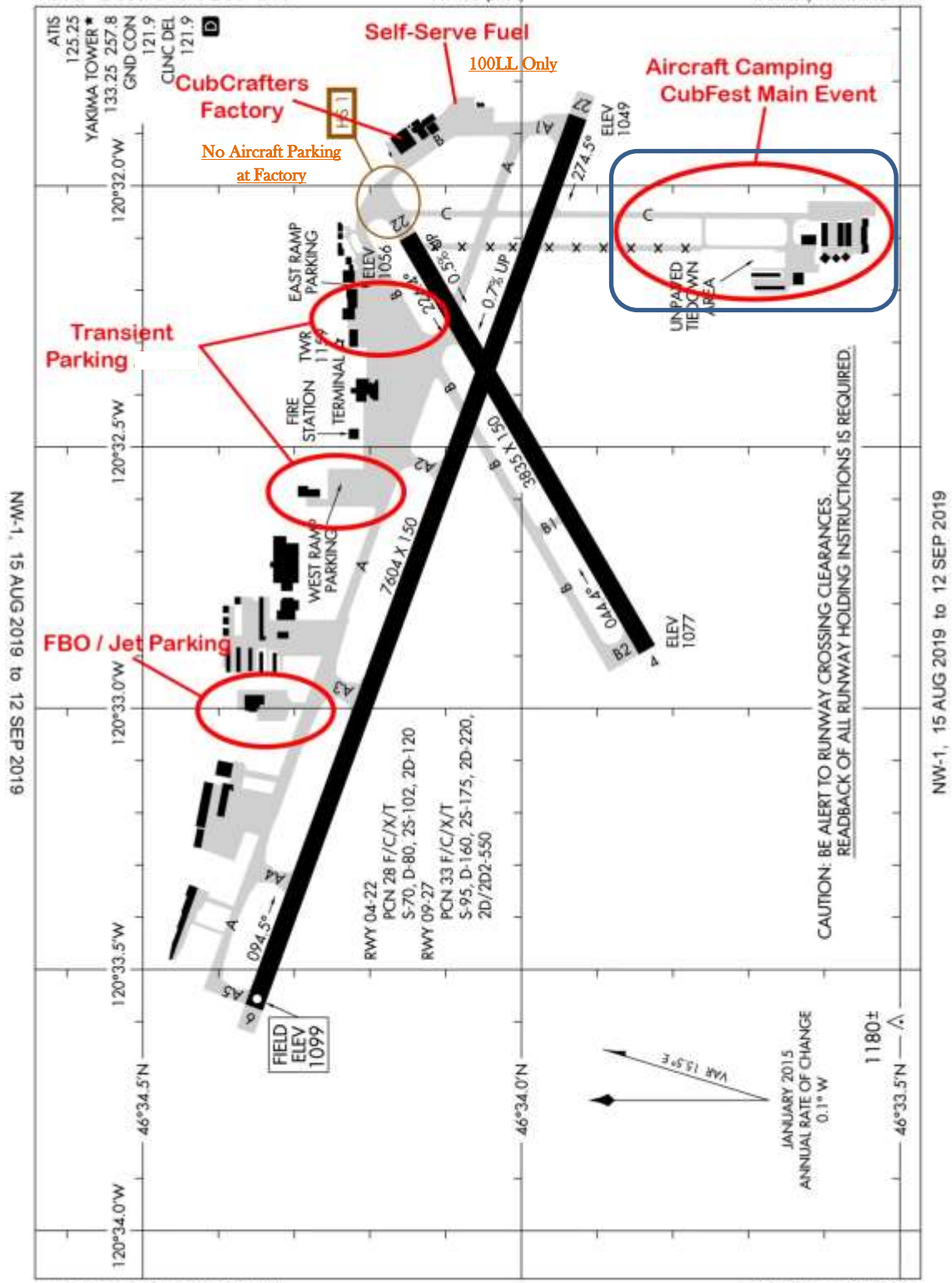


KYKM - ATIS: 125.25 - TOWER: 133.25 - GROUND: 121.90 - FSS: 122.50

16259

AIRPORT DIAGRAM

YAKIMA AIR TERMINAL/MCALLISTER FIELD (YKM)
AL-465 (FAA) YAKIMA, WASHINGTON



NW-1, 15 AUG 2019 to 12 SEP 2019

NW-1, 15 AUG 2019 to 12 SEP 2019

AIRPORT DIAGRAM

YAKIMA AIR TERMINAL/MCALLISTER FIELD (YKM)
16259 YAKIMA, WASHINGTON

AIRCRAFT PARKING & FUELING:

Aircraft Camping / Main Event Parking - Cub and backcountry type aircraft parking and aircraft camping area is located at the south end of Taxiway C (in the grass/dirt). Arrivals should ask the tower/ground controller for parking at “Aircraft Camping Area” or the “CubFest Event.” Once you exit the tower controlled movement area on Taxiway C, event staff will direct aircraft to parking. Please be courteous to other attendees and only shutdown your aircraft in the designated area, before pushing into the tie-down and camping area. Campers and aircraft parking on the grass in the main event area should bring their own aircraft tie-downs.

Transient Aircraft Parking – Parking for aircraft requiring hard surface parking (on asphalt), and/or transient parking for aircraft that are not staying overnight, is located to the east and west of the main terminal on the north side of the field along Taxiways A and B. Arrivals should ask the tower/ground controller for transient parking at “The Base of the Tower” or “On the North Ramp.” Please do not pay the airport transient parking fee; it will be paid by CubCrafters as a courtesy for all attendees. Shuttles will be provided by event staff, between these areas and the main event next to Taxiway C. Aircraft parking in transient areas should bring their own tie-downs straps/ropes.

Turbine / FBO Parking – Parking for larger aircraft requiring hard surfaces and FBO services is available at McCormick Air Center located on the north ramp off of Taxiway A. Arrivals should coordinate with the FBO in advance by calling (509) 248-1680, and should ask the tower/ground controller for “FBO parking” or “McCormick Air Center.” Shuttles will be provided by the FBO and event staff, between the FBO and the main event next to Taxiway C.

Fuel Services – Both 100LL and Jet A are available on the field:

- Self-service 100LL fuel is located at the McAllister Museum on Taxiway B, adjacent to the CubCrafters main factory.
- Full-service (planeside) 100LL and Jet A fuel is available from McCormick Air Center by calling (509) 248-1680.

PLEASE NOTE: If you are requesting full-service 100LL fuel at the main CubFest event, or while parked in the main event aircraft camping, areas located adjacent to the south end of Taxiway C, please plan on fueling your aircraft prior to entering or after exiting the grass parking areas.

CUBFEST ONSITE EVENT SCHEDULE:



- **Friday, October 11 (Arrivals)**

- Arrivals (all day)
- CubCrafters Factory Tours (10:00am – 4:00pm)
- Local Area Adventures – Enjoyable half day guided driving tours: local winery tasting rooms or local craft breweries (3:00pm – 7:00pm) ~See Page 15 to signup
- Evening Pizza Feed at Completion Center, all are welcome (6:00pm – 8:00pm)
- Live Entertainment at Completion Center (7:30pm – 9:30pm)
- Welcome Campfire Gathering (8:00pm – 11:00pm) ~ WX permitting

- **Saturday, October 12 (Main Events)**

- CubFest Forums – **Sponsored by CubCrafters-Lycoming-Hartzell**; Delivery Hangar (10:00am – 3:00pm)
- Lunch - Self-serve Sandwich Bar at Completion Center (12:00pm – 2:00pm)
- CubCrafters Factory Tours (10:00am – 4:00pm)
- Local Area Adventures – Enjoyable half day guided driving tours: Mt. Rainer (8:00am to 3:00pm, Wx dependent), Yakima Valley winery tour (12:00pm – 5:00pm), and craft brewery tour (2:00pm – 6:00pm) ~See Page 15 to signup
- **CubCrafters' Customer Appreciation Homecoming Dinner** (6:00pm)
- Live Entertainment at Completion Center (7:30pm – 9:30 pm)
- Campfire Gathering (8:00pm – 11:00pm) ~ WX permitting

- **Sunday, October 13 (Departures)**

- Breakfast provided at Completion Center (8:00am – 10:00AM)
- Factory Tours (10:00am – 2:00pm)
- Self-guided local area excursions
- Departures (all day)

- **Available throughout CubFest:**

- **Aircraft Maintenance** – minor squawk repairs and oil changes are available by calling CubCrafters Services at (509) 248-1025; **AOG/afterhours Todd @ (509) 907-1000**
- **Demonstration Flights** – perspective buyers should contact your local CubCrafters Dealer to arrange a demonstration flight.
- **Static Displays** – CubCrafters will have several static display aircraft set up for the duration of the event located at the Completion Center.
- **McAllister Museum of Aviation** – Located on the field, adjacent to CubCrafters main plant, this museum offers local aviation history displays; hours: Friday 10am-4pm & Saturday 9am-4pm, mcallistermuseum.org, (509) 457-4933

OFFSITE FLY-OUT OPPORTUNITIES:

CubCrafters is not organizing/sponsoring off-site fly-outs, however, there are some great and unique nearby public airports that are favorites with many local pilots:

- **ID: 4S6 - Tieton State Airport (reprinted from the WSDOT Aviation website)**



Overlooking Rimrock Lake, on the east side of White Pass, is the beautiful Tieton Airport. In 1980, it was naturally resurfaced with six inches of ash from Mount St. Helen's. There is a large forest service campground adjacent to, and a boat launching area only a few hundred feet away. Fishing is excellent, there are many hiking trails, and the scenery is superb. Tieton is such a nice place to go that some of the flying clubs have made the airport their summer campground.

The turf runway can be rough in spots due to rutting from water runoff and vehicles tracks, however Spring maintenance by volunteers and recently added vehicle access blocks and signage helps to keep the runway in suitable condition throughout the summer. The south end of the 2,509 foot runway is right at the edge of the lake. The approach from the lake is long and clear and the runway slopes uphill to the northeast for easy deceleration. The parking area is small, but has a tie down cable. The 2,964 foot field elevation does cause some summertime density altitude problems. There is a mountain in the approach path from the northeast, and the runway drops rapidly away to the southwest.

Recommend pilots overfly the field to check conditions, look for obstructions and plan your approach. Note: Firefighting activity is common at this airport. Watch for helicopter activity. Check NOTAMs and TFRs. Contact Flight Service Station at 1-800-WX-BRIEF for more information.

- **ID: 6S9 - Stehekin State Airport (reprinted from the WSDOT Aviation website)**



Just west of the village of Stehekin, at the head of Lake Chelan, Stehekin State Airport provides access to some of the most awesome scenery in Washington. This location is a favorite of campers, fishers, and hunters. Food, lodging, and resort activities are available in the village. Pack trips into the heart of the Cascades are also available. When you fly into this magnificent country you will be amazed by its beauty. However, the magnificence of the terrain makes Stehekin one of the most difficult airports in the state. It is definitely a strip for an experienced mountain pilot.

The 2,630 foot turf runway is rough, and frost heaved rocks are common; however our local maintenance man continues to improve the runway surface and keeps the irrigation system in service. Both approaches are difficult. There is a large mountain directly off the east end of the field. The runway slopes significantly uphill to the west, and tall trees surround the airport. There are tall trees at the east threshold of the runway, and are very close to the west end, also. The terrain rises rapidly and the valley narrows quickly to the west. Strong gusty winds are common. Though the field elevation

is only 1,230 feet, density altitude problems are guaranteed in the summer. Lightweight aircraft with good short field characteristics can usually use the field any time of the day; others usually have to depart in the early morning. Animals are frequently present, with people and vehicles somewhat less common. It is essential to overfly the field to check conditions, and plan an approach strategy.

The most common approach method is to ignore wind direction, unless winds are strong, and land uphill to the west. With a good tailwind, this results in difficulty getting down to the runway after passing over the trees on the east threshold, and a guaranteed long landing. Departures are usually to the east to take advantage of descending terrain, with aircraft gently moving towards the center of the valley after passing treetop height. We strongly recommend early morning arrivals and departures when the wind is calm and the temperatures are cool. Note: Firefighting activity is common at this airport. Watch for helicopter activity. Check NOTAMs and TFRs. Contact Flight Service Station at 1-800-WX-BRIEF for more information.

- **ID: S16 - Copalis State Airport (reprinted from the WSDOT Aviation website)**



Background - Copalis Beach Airport is located along the northwest pacific coast line of Washington State within the boundaries of the North Beach Seashore Conservation Area, adjacent to the Olympic Coast National Marine Sanctuary near the mouth of the Copalis River. The Copalis Airport is the only known beach airport in Washington State where aircraft landing is legal. The North Beach Seashore Conservation Area is subject

to the jurisdiction of the Washington State Parks and Recreation. Use of the beach airport is under the jurisdiction of the Washington State Department of Transportation's (WSDOT) Aviation Division.

Where to Land? - Through cooperation between WSDOT Aviation Division and the Ocean City State Park the landing area is designated between the mouth of the Copalis River to the south and north to the rocks. WSDOT has determined that ongoing river migration and ocean beach erosion has reduced the 4500 foot long by 150 foot wide runway by approximately 1,100 feet possibly more. Please check this website and airport facilities directory, for future updates to the runway length.

Orange reflective markers are installed near the north and south ends of the authorized landing area to assist with identification of the landing area. Standard traffic patterns should be observed.

As pilot in command you should consider the unique conditions of beach landing:

- Check local tide tables.
- Dark, wet sand at low tide is the hardest for landing.
- The dry, light-colored soft sand near the high tide mark should be avoided.
- Over flight is recommended before landing to check for obstructions such as exposed rocks, debris and pedestrians.
- The landing area is shared with other beach users and activities.
- Park aircraft in a row along the high tide mark.
- The busiest time is during the summer months and during the winter clamming season.
- Announce your intentions on the common radio frequency.
- Do not park aircraft overnight due to tidal changes.
- Observe all state park regulations.

Fly Friendly Policies - Copalis Airport is a unique environment shared by many users. Pilots are encouraged to "Fly Friendly" at Copalis in consideration of local residents and visitors. In that spirit of cooperation aircraft operators should avoid activities that create a nuisance or conflict with other beach users.

Olympic Coast National Marine Sanctuary - Copalis Beach Airport is within the Olympic Coast National Marine Sanctuary. Aircraft operators should be aware of increased bird activity and airspace restrictions associated with the refuge during landing and departure. Before flying at Copalis, pilots are encouraged to check the applicable Aeronautical Chart for federal over flight guidance for flights over charted National Park, U.S. Fish and Wildlife and U.S. Forest Service areas.

Facilities - Similar to other state backcountry airports, there are no facilities at the airport with the exception of the airport end markers, a sign-in area and a wind cone located near mid airport at the high tide line. The windsock and signs are checked and replaced as necessary at least twice a year due to extreme weather conditions and the corrosive salt water environment. The airport is routinely checked by State Parks Beach Rangers; however, weather and vandalism have been problems for the maintenance of the windsock and signs.

What to do and see at the beach - This is an excellent area for recreation, whether you are taking in the sights of the great Pacific Ocean, clam digging, surfing, fishing, or beach combing. No overnight camping is allowed at the airport.

- **ID: 4S2 - Ken Jernstedt Airfield (reprinted from the Port of Hood River / WAAAM websites)**



The Ken Jernstedt Airfield, nestled in a wide valley two miles south of Hood River, is a Basic Utility, Stage II Airport named for a celebrated WWII Fighting Tigers pilot who later became a local and state politician.

The Airport's Fixed Base Operator (FBO), TacAero, offers self-serve fuel, flight school, private lessons, sight-seeing flights, aircraft rentals and mechanic services. The Western Antique Aeroplane and Automobile Museum (WAAAM) is located adjacent to the Ken Jernstedt Airfield, with its unique collection that draws national interest.

The WAAAM Air & Auto Museum has one of the largest collections of still-flying antique aeroplanes and still-driving antique automobiles in the country, including the 1917 Curtiss JN-4D Jenny featuring an OX-5 90 HP engine, our Piper Cub and WACO collections, Aeronca collection, Stearman collection and many more fun aircraft.

For more information visit the WAAAM website (www.waaamuseum.org) or the TacAero website (www.tacaero.com), or call Jeremy at (541) 399-2469.

HOTELS – RENTAL CARS – RESTAURANTS:

Hotels - For those attending *CubFest* and not camping with their aircraft, there are several local hotels with block room reservations and rates for this event. When calling for a reservation just mention “The CubCrafters event” or ask for the “*CubFest* Block Rate.”

- **Hotel Maison** – 321 E Yakima Ave (downtown) - \$154/night – (509) 571-1900
<https://thehotelmaison.com/>
- **Hilton Garden Inn** – 401 E Yakima Ave (downtown) - \$119/night – (509) 454-1111
https://hiltongardeninn3.hilton.com/en/hotels/washington/hilton-garden-inn-yakima-YKMYAGI/index.html?SEO_id=GMB-HI-YKMYAGI
- **Holiday Inn Express** - 1215 Ahtanum Dr (near airport) - \$105/night - (509) 902-8000
https://www.ihg.com/holidayinnexpress/hotels/us/en/union-gap/ykmun/hoteldetail?cm_mmc=GoogleMaps- -EX- -US- -YKMUN
- **Home2 Suites** - 2420 W Nob Hill Blvd (near airport) - \$96/night – (509) 453-1806
https://home2suites3.hilton.com/en/hotels/washington/home2-suites-by-hilton-yakima-airport-YKMWAHT/index.html?SEO_id=GMB-HT-YKMWAHT
- **Oxford Suites Yakima** - 1701 E Yakima Ave (near interstate) \$139/night - (509) 457-9000
<https://www.oxfordsuitesyakima.com/>

Car Rentals – For those wishing to rent a car for this event, both Avis and Hertz are located at the Yakima Air Terminal, adjacent to the transient parking areas on the north side of the field, while Enterprise is located off-site.

- **AVIS** - 2300 West Washington Avenue, Suite 7, Yakima, WA, 98903 - (509) 469-4543
Hours of Operation: Sun 10:00 AM - 4:00 PM and 11:30 PM - 12:30 AM; Mon - Wed 8:00 AM - 6:00 PM and 11:30 PM - 12:30 AM; Thu - Fri 8:00 AM - 6:00 PM; Sat 9:00 AM - 3:00 PM
- **Hertz** - 2300 West Washington Avenue, Yakima, WA, 98903 - (509) 469-4543
Hours of Operation: Mon-Fri 8:00AM-12:00PM 1:00PM-5:00PM, Sat-Sun 10:00AM-3:00PM
- **Enterprise Rent-A-Car** - 1303 South 1st Street, Yakima, WA 98901 - (509) 248-2170
Hours: Sunday 10:00AM-4:00PM, Monday to Friday 7:30AM-6:00PM, Saturday 9:00AM-2:00PM

Restaurants – For those wishing to catch a local meal offsite we can recommend several typically great options (ratings shown are based on Yelp or TripAdvisor reviews):

- **Cowiche Canyon - Kitchen & Icehouse** (downtown, 4.5/5 rating) - 202 E Yakima Ave, Yakima, WA 98901 - (509) 457-2007
- **WaterFire Restaurant & Bar** (near airport, 4.5/5 rating) - 4000 Creekside Loop, Yakima, WA 98908 - (509) 853-1057
- **Wild Fired Pizza** (near airport, 4.5/5 rating) - 8501 Ahtanum Road, Yakima, WA 98903 (509) 966-3820
- **Thai House Restaurant** (downtown, 4.5/5 rating) - 14 N 2nd St, Yakima WA 98901 – (509) 469-8986
- **Zesta Cucina** (downtown, 4.5/5 rating) - 5110 Tieton Dr, Yakima, WA 98908 (509) 972-2000
- **Los Hernandez Tamales** (near airport - 4.5/5 rating) - 3706 Main St, Union Gap, WA 98903 - (509) 457-6003
- **Gyro House** (near airport – 4.5/5 rating) - 3609 W Nob Hill Blvd, Yakima, WA 98902 (509) 426-2531
- **Gasperetti's Gourmet Restaurant** (near downtown – 4.5/5 rating) - 1013 N 1st St, Yakima, WA 98901 (509) 248-0628
- **Second Street Grill** (downtown, 4/5 rating) - 28 N 2nd St, Yakima, WA 98901 (509) 469-1486
- **Yakima Steak Company** (downtown, 4/5 rating) - 221 W Yakima Ave, Yakima, WA 98902 (509) 571-1472
- **Norm's of Yakima** (downtown, 4/5 rating) - 5 North Front St, Yakima, WA 98901 (509) 902-1505
- **Kyoto Sushi & Steakhouse Japanese Restaurant** (near airport, 3.5/5 rating) - 2405 W Washington Ave, Ste 150, Yakima, WA 98903 – (509) 571-1919

AIRPORT SHUTTLE - CAR PARKING - RV PARKING:

CubCrafters will be providing a continuous shuttle service, looping every 30 minutes from: the camping/*CubFest* main event area, to the CubCrafters Fabrication Plant, to the CubCrafters Assembly Plant, and back to the main event area. Another shuttle will provide access to/from: the main event area and the transient aircraft parking (north ramp) areas, FBO, and terminal (rental cars). The FBO will also supply rides to the main event area, upon arrival. Ask an event staffer for more information or look for the signs posted near pickup/drop-off locations.

Personal or rental cars and RV's for drive-in attendees *will not be allowed on the ramp at the main event, nor within the aircraft camping areas*. However, there is nearby car parking on the street adjacent to the event area, and both car and RV parking at the adjoining CubCrafters property a short walk away. Check-in at the welcome/info desk, located at the Completion Center at the main event center, or ask an event staffer for more information.

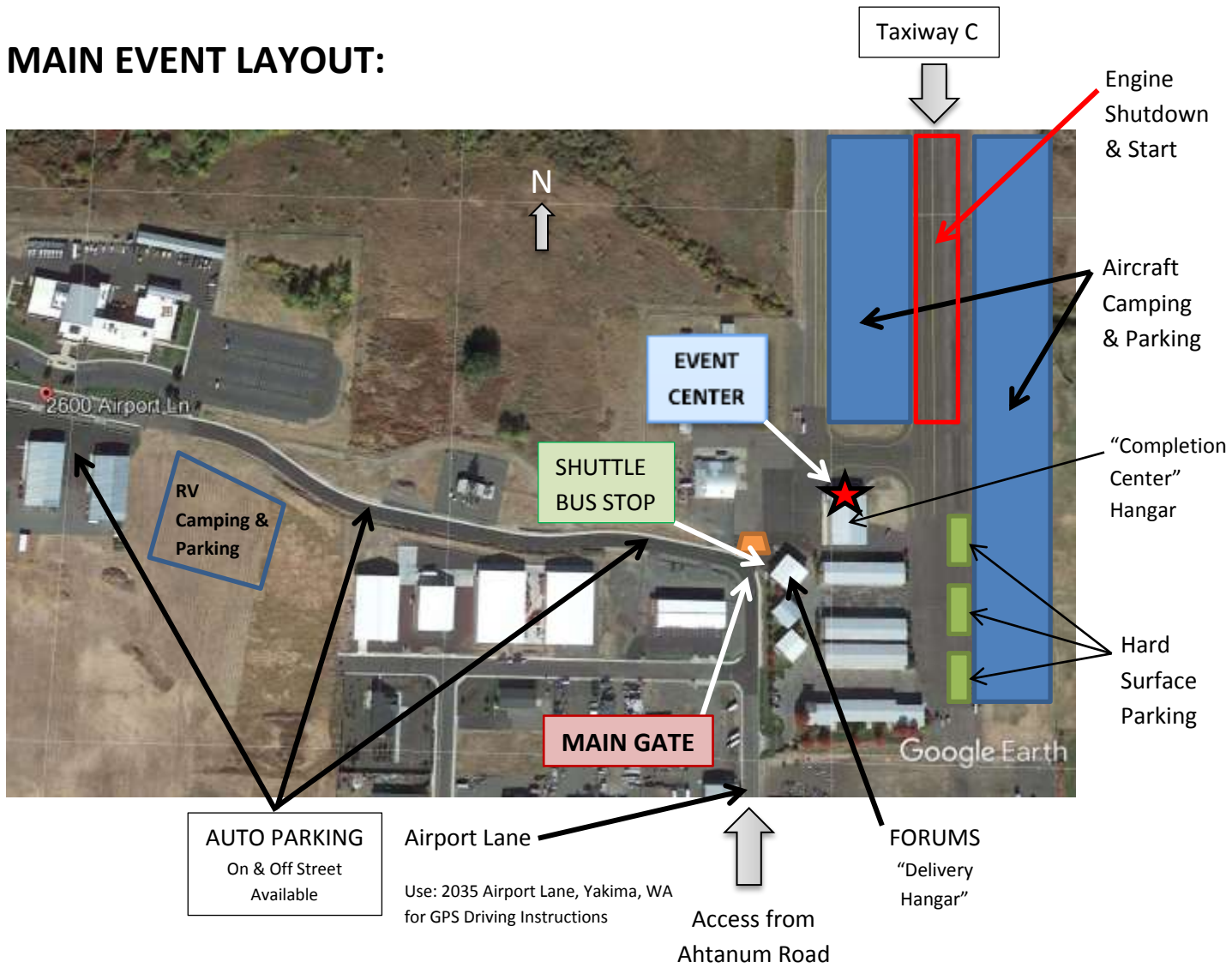
FACTORY TOURS:

Tours of the CubCrafters' manufacturing facilities will be offered at two locations: the Fabrication Plant (3 building facilities) on the south campus, and the Assembly Plant on the east ramp of the airport. Tours are open at each location from 10am to 4pm on Friday and Saturday, and then from 10am to 2pm on Sunday.

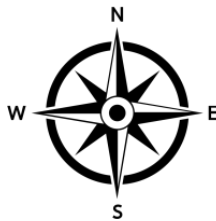
Each facility tour starts on the half hour and typically runs for 30 to 45 minutes. To join a tour, simply hop in the shuttle provided by CubCrafters. Your tour guides are expert *CRAFTERS*, who build Cubs every day; please feel free to ask questions and take photographs.



MAIN EVENT LAYOUT:



CUBFEST 2019



46°34'10.4"N 120°31'53.5"W

GUIDED LOCAL AREA ADVENTURES:

[Yakima Valley Brewery Tasting Room Tours](#)

The large majority of the nation's hops are grown right here in the Yakima Valley. HOP on and tour a selection of popular Yakima area craft breweries. Space is limited to 14 guests (21 years and older) per tour. Contact Andrew Brauer at 509-248-9491, x127 to RSVP in advance, or sign up upon arrival at the Welcome/Info Desk.

- Friday Evening 3-7pm
- Saturday Afternoon 2-6pm

[Yakima Valley Winery Tours](#)

Take a ride on a tour of some of the Yakima Valley's many, well respected wineries and tasting rooms. Space is limited to 14 guests (21 years and older) per tour. Contact Andrew Brauer at 509-248-9491, x127 to RSVP in advance, or sign up upon arrival at the Welcome/Info Desk.

- Friday Afternoon (Yakima) 3-7pm
- Saturday Mid-day (Zillah) 12-5pm

[Mt. Rainier Visit](#)

Take a walk around Paradise! CubCrafters will be providing transportation to Mt. Rainier National Park Saturday morning, 8am – 3pm. Visit the Paradise Lodge, visitor center, and easy hiking paths on the lower slopes of the most glaciated peak in the contiguous United States. Stunning vistas of Washington's highest peak are plentiful, but are subject to weather. Guests are encouraged to be prepared for rapidly changing weather conditions. Contact Andrew Brauer at 509-248-9491, x127 to RSVP in advance, or sign up upon arrival at the Welcome/Info Desk.

[Fishing in Yakima Canyon](#)

The Yakima River is a premier fly-fishing location. Contact Red's Fly Shop at (509) 933-2300 to book your guided fishing trip; they look forward to hosting CubFest attendees.

[Additional Yakima Area Attractions](#)

Want to strike out on your own and experience some of the Yakima area's many other unique attractions? Visit Yakima.com as an excellent resource, or ask one of our friendly welcome staff for suggestions.

<u>Visit Yakima</u>	<u>Cowiche Canyon Trail</u>	<u>Yakima Area Arboretum</u>
<u>Johnson Orchards</u>	<u>Umtanum Creek Canyon Trail</u>	<u>Yakima Greenway</u>

CAMPSITE & EVENT GUIDELINES:

The City of Yakima and Yakima Air Terminal have kindly provided special permission of on-field camping during *CubFest*. Campers are expected to support safety minded guidelines:

- All aircraft must be tied down.
- Only one tent per airplane unless a second tent is needed for immediate family members. Tents shall fit within the footprint of the aircraft.
- Aircraft engines may not be started at the campsite. On departure, aircraft must be pushed out of the campsite to the designated start-up/shutdown hard surface zone.
- Keep your campsite clean and noise levels reasonably down.
- Please leave campsites the way you found them and place all waste in appropriate receptacles. No illegal dumping.
- All fueling operations shall be done with the utmost safety in mind, in accordance with NFPA 407, and with special regard to the following items:
 - Prior to initiation of fueling operations, the fueling vehicle and the aircraft to be fueled shall be bonded.
 - No open flame, cooking stoves, or smoking shall be permitted within 50 feet of any fueling operations .
 - All fuel spills shall be reported immediately to airport officials.
 - All fueling hoses shall be properly stowed prior to moving the fueling vehicle.
 - Fueling shall not take place during thunderstorms.

Fire Safety

- Campfires are prohibited in camping area.
- If clean air or burn bans are not in effect for the airport area, CubCrafters staff plans to host evening campfire gatherings with covered fire pits, in an area designated and coordinated with airport officials.
- Cooking stoves must comply with local fire department guidelines.
- Do not leave campsite areas without completely extinguishing stoves.
- It is strongly recommended that aircraft near stoves be checked for any fuel fumes or leakage, and the stove be elevated above ground level.
- Cooking stoves must be a safe distance (10 feet) away from any aircraft.
- In the event of high wind conditions cooking stoves should not be used.

Drones/UAVs – Drones are not authorized for use at *CubFest* without advanced written permission from airport officials, as well as appropriate FAA waivers and licensing.